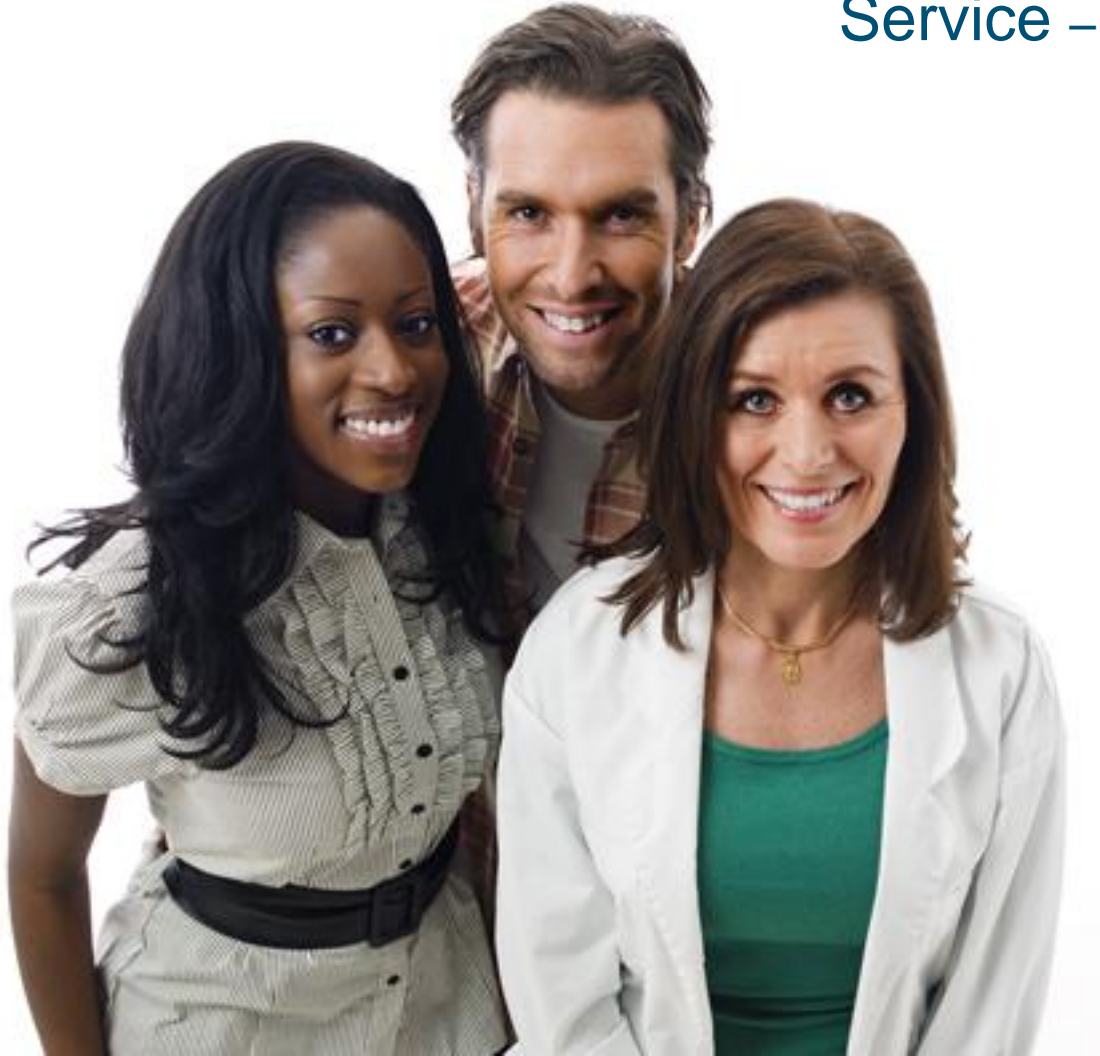
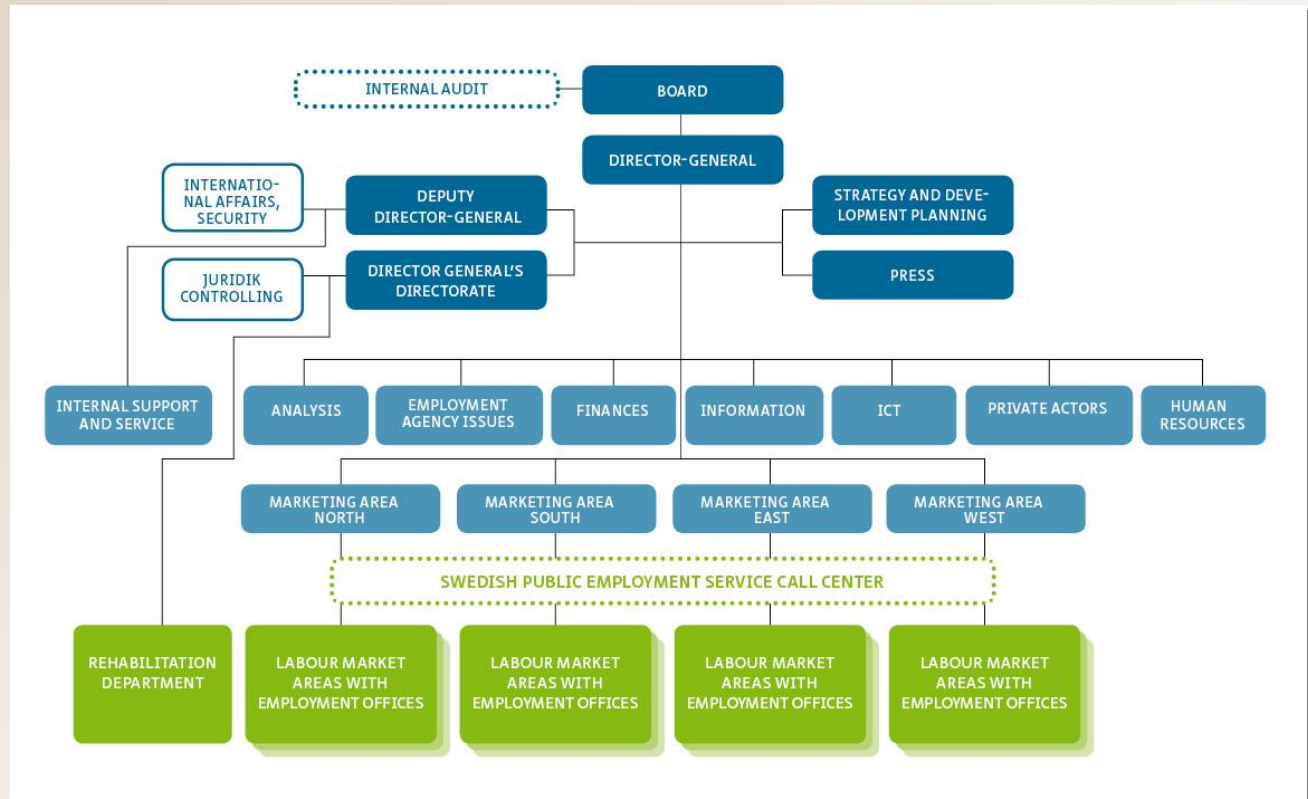


# Arbetsförmedlingen

The Swedish Public Employment Service – meeting place for opportunities



## Our organization



## Finances 2009

- We are financed by government funds.
- Total appropriations for 2009 are 52 billion SEK (approx. € 4,8 billion).
- 30 billion SEK goes to support to the unemployed in the form of unemployment compensation and activity grants.
- 7 billion SEK goes to buying services, e.g. from the actors we cooperate with.
- 10 billion SEK goes to wage subsidies and other special measures for the disabled.
- 5 billion SEK goes to the Swedish Public Employment Service's salaries, premises and other running costs.

## Arbetsförmedlingen in 2008

- 618 000 vacancies were advertised.
- 998 000 job-seekers were registered for all or part of 2008.
- 517 000 job-seekers found work.
- Call Centres answered 908 700 telephone calls.
- arbetsformedlingen.se had about 960 000 unique visits every month.

## Our opening hours

- [arbetsformedlingen.se](https://arbetsformedlingen.se)  
Open day and night, all the year round
- Arbetsförmedlingen  
(The Swedish Public Employment Agency)  
telephone number 0771-416 416  
Weekdays 8 am–10 pm and  
Saturday-Sunday 10 am–4 pm
- Our local employment offices  
Weekdays: 10 am–4 pm

## Our mission

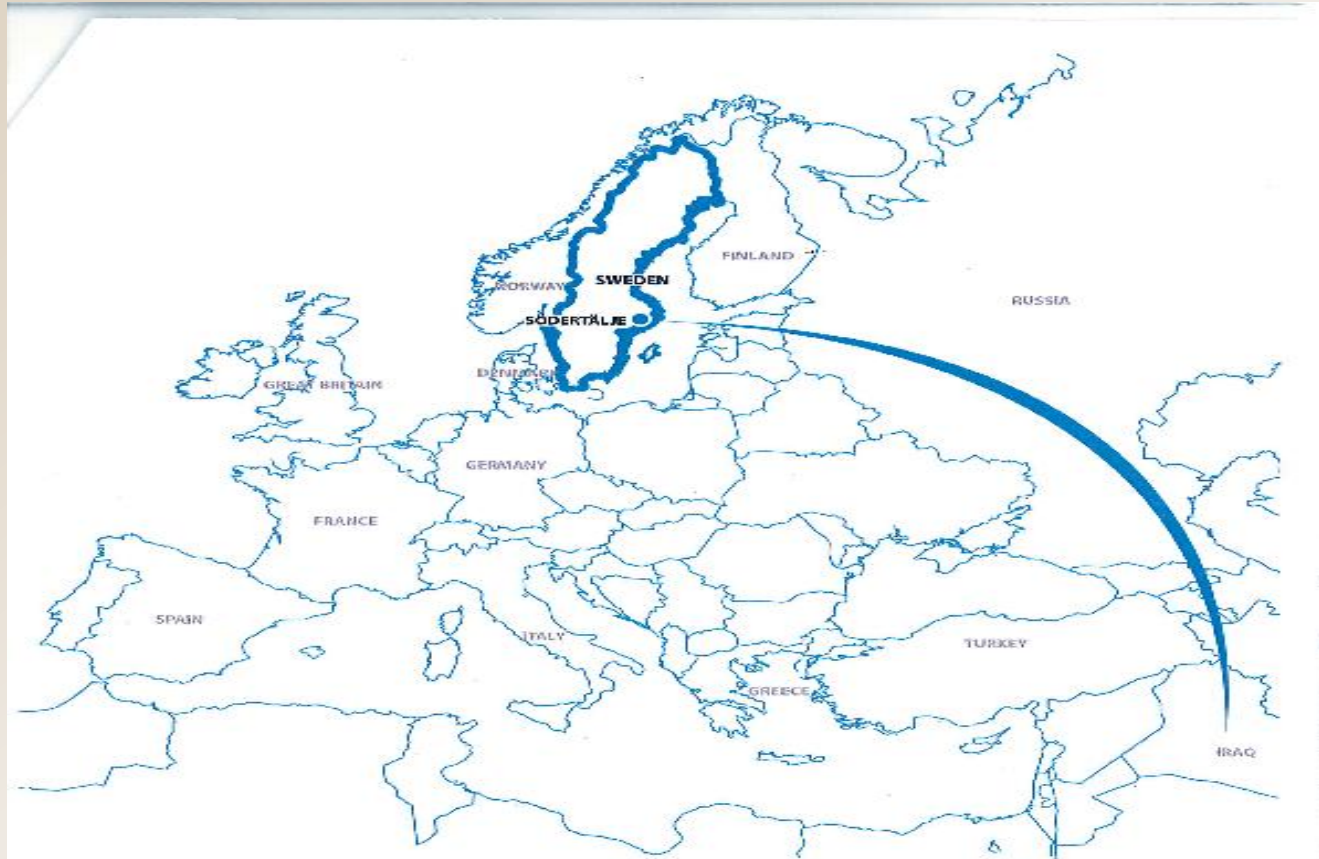
We have an assignment from the Swedish Parliament and the Swedish Government to improve the functioning of the labour market. We do this by:

- matching jobseekers with employers wanting to recruit staff
- making an extra effort to service individuals far from the labour market
- contributing in the long term to stable and high employment rates.

## Our mission also includes:

- Cooperating with other actors so job-seekers find work swiftly and efficiently.
- Taking comprehensive responsibility for disability issues within labour market policy.
- Ensuring that newly arrived immigrants enter the job market or find work as soon as possible.
- Stimulating job-seekers in different ways to look for work all over the country.
- Ensuring that unemployment insurance is used correctly during the period when a new job is being found.

## Background information about Södertälje



## Södertälje

- 83 600 inhabitants
- Scania, AstraZeneca
- 40 percent of the inhabitants has foreign background
- 15 000 Assyrians/Syrians
- 6 000 Iraqis
- 5 % of all refugees coming to Europe from Iraq are accommodated in Södertälje

## Ensuring that newly arrived immigrants enter the job market or find work as soon as possible

- A lot of cooperation with the municipal organisations at all levels
- Linguistic support
- Assessment of professional skills
- Special job training programs for immigrants: warehouse jobs, drivers, healthcare, mechanics, car repairs, office assistants, work-related linguistic studies specifically for work with the Prison and Probation Service .
- Education fairs

**Stimulating job-seekers in different ways to look for work all over the country.**

- Job hunting/Visiting employers
- Recruitment events:
  - Charting buses to recruitment events
  - Counties of Dalarna and Småland are represented in Södertälje
  - Af Härjedalen is specifically matching the targeted group to the jobs in northern Sweden
- National matching- a brand new project
- Complimentary service providers